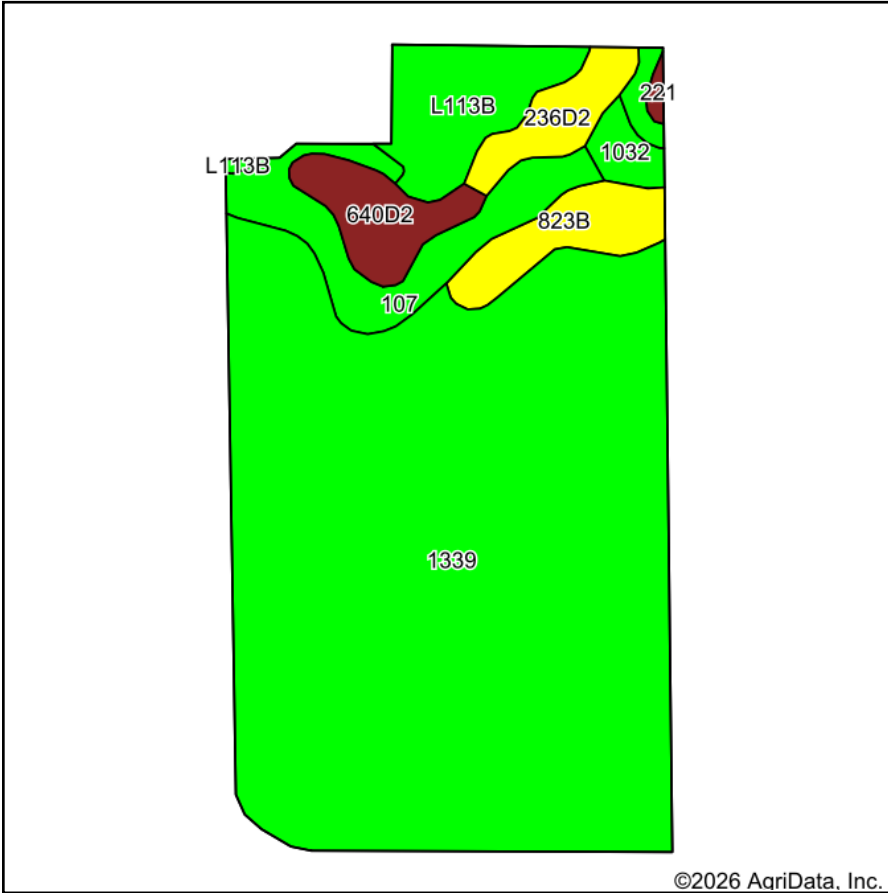
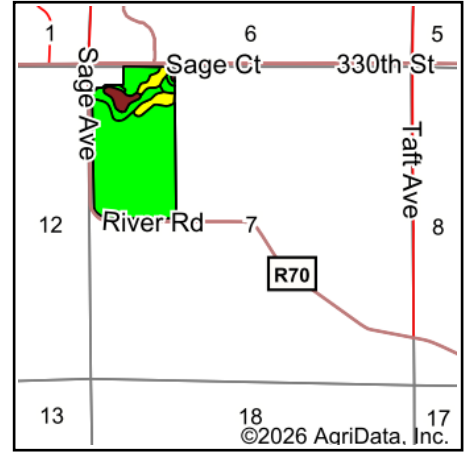


Soils Map



Soils data provided by USDA and NRCS.



State: **Iowa**
 County: **Hancock**
 Location: **7-97N-23W**
 Township: **Ellington**
 Acres: **76.39**
 Date: **5/12/2026**



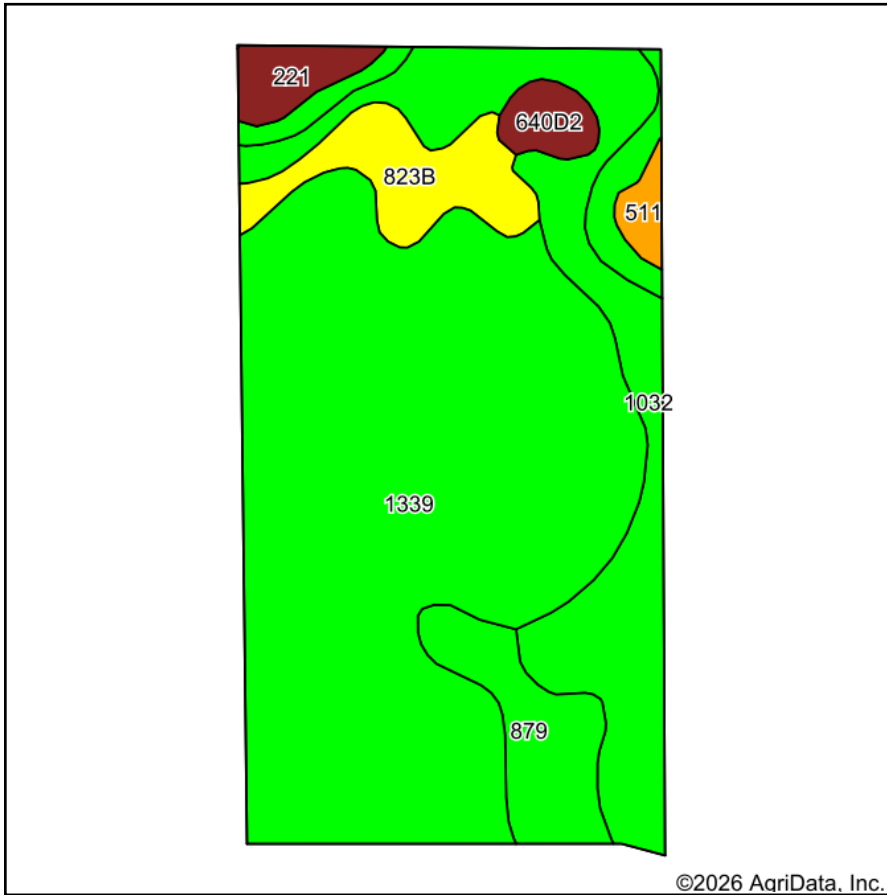
Area Symbol: IA081, Soil Area Version: 36

Code	Soil Description	Acres	Percent of field	CSR2 Legend	Non-Irr Class *c	CSR2**
1339	Truman silt loam, 0 to 2 percent slopes	57.44	75.2%		Iw	99
107	Webster clay loam, 0 to 2 percent slopes	5.03	6.6%		IIw	86
L113B	Reedslake-Le Sueur complex, 1 to 6 percent slopes	4.41	5.8%		IIe	85
823B	Ridgeport sandy loam, 2 to 5 percent slopes	2.84	3.7%		IIIe	51
640D2	Sunburg sandy loam, 9 to 14 percent slopes, moderately eroded	2.77	3.6%		IIIe	28
236D2	Lester loam, 10 to 16 percent slopes, moderately eroded	2.20	2.9%		IVe	49
1032	Spicer silty clay loam, 0 to 2 percent slopes	0.98	1.3%		IIw	91
1595	Harpster silty clay loam, 0 to 2 percent slopes	0.53	0.7%		IIw	76
221	Klossner muck, 0 to 1 percent slopes	0.19	0.2%		IIIw	32
Weighted Average					1.38	91.1

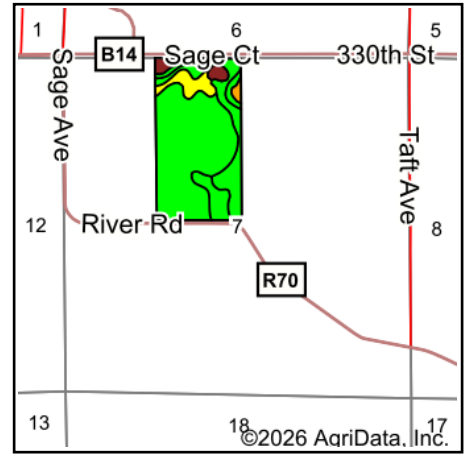
**IA has updated the CSR values for each county to CSR2.

*c: Using Capabilities Class Dominant Condition Aggregation Method

Soils Map



Soils data provided by USDA and NRCS.



State: **Iowa**
 County: **Hancock**
 Location: **7-97N-23W**
 Township: **Ellington**
 Acres: **77.87**
 Date: **5/12/2026**



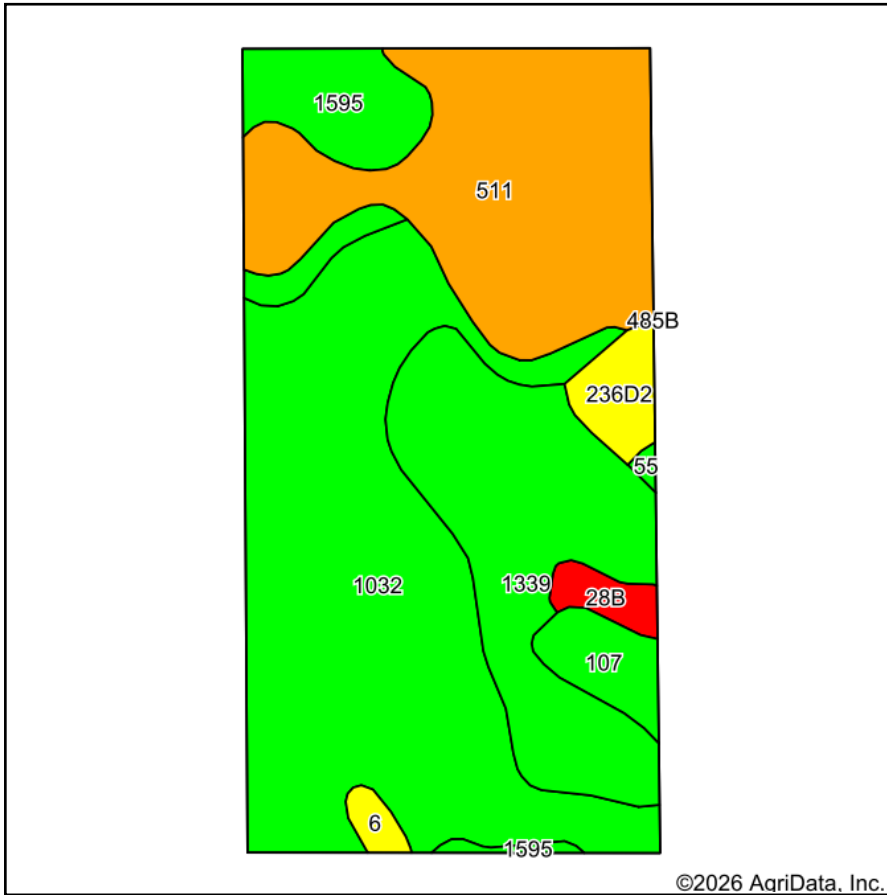
Area Symbol: IA081, Soil Area Version: 36

Code	Soil Description	Acres	Percent of field	CSR2 Legend	Non-Irr Class *c	CSR2**
1339	Truman silt loam, 0 to 2 percent slopes	46.83	60.1%		Iw	99
1032	Spicer silty clay loam, 0 to 2 percent slopes	14.93	19.2%		IIw	91
879	Fostoria loam, 1 to 3 percent slopes	4.90	6.3%		Iw	91
823B	Ridgeport sandy loam, 2 to 5 percent slopes	4.82	6.2%		IIIe	51
1595	Harpster silty clay loam, 0 to 2 percent slopes	2.40	3.1%		IIw	76
221	Klossner muck, 0 to 1 percent slopes	1.72	2.2%		IIIw	32
640D2	Sunburg sandy loam, 9 to 14 percent slopes, moderately eroded	1.43	1.8%		IIIe	28
511	Blue Earth mucky silt loam, 0 to 1 percent slopes	0.84	1.1%		IIIw	66
Weighted Average					1.45	90.1

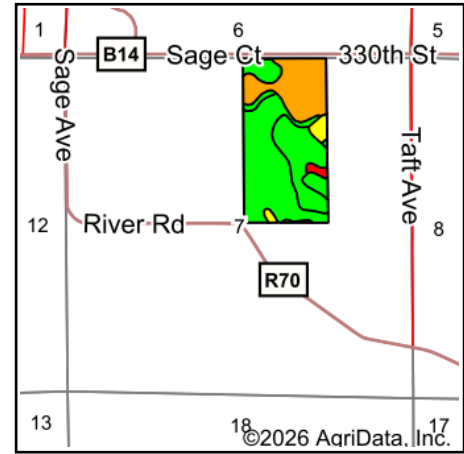
**IA has updated the CSR values for each county to CSR2.

*c: Using Capabilities Class Dominant Condition Aggregation Method

Soils Map



Soils data provided by USDA and NRCS.



State: **Iowa**
 County: **Hancock**
 Location: **7-97N-23W**
 Township: **Ellington**
 Acres: **77.35**
 Date: **3/23/2026**



Maps Provided By:

 CUSTOMIZED ONLINE MAPPING
 © AgriData, Inc. 2025 www.AgriDataInc.com



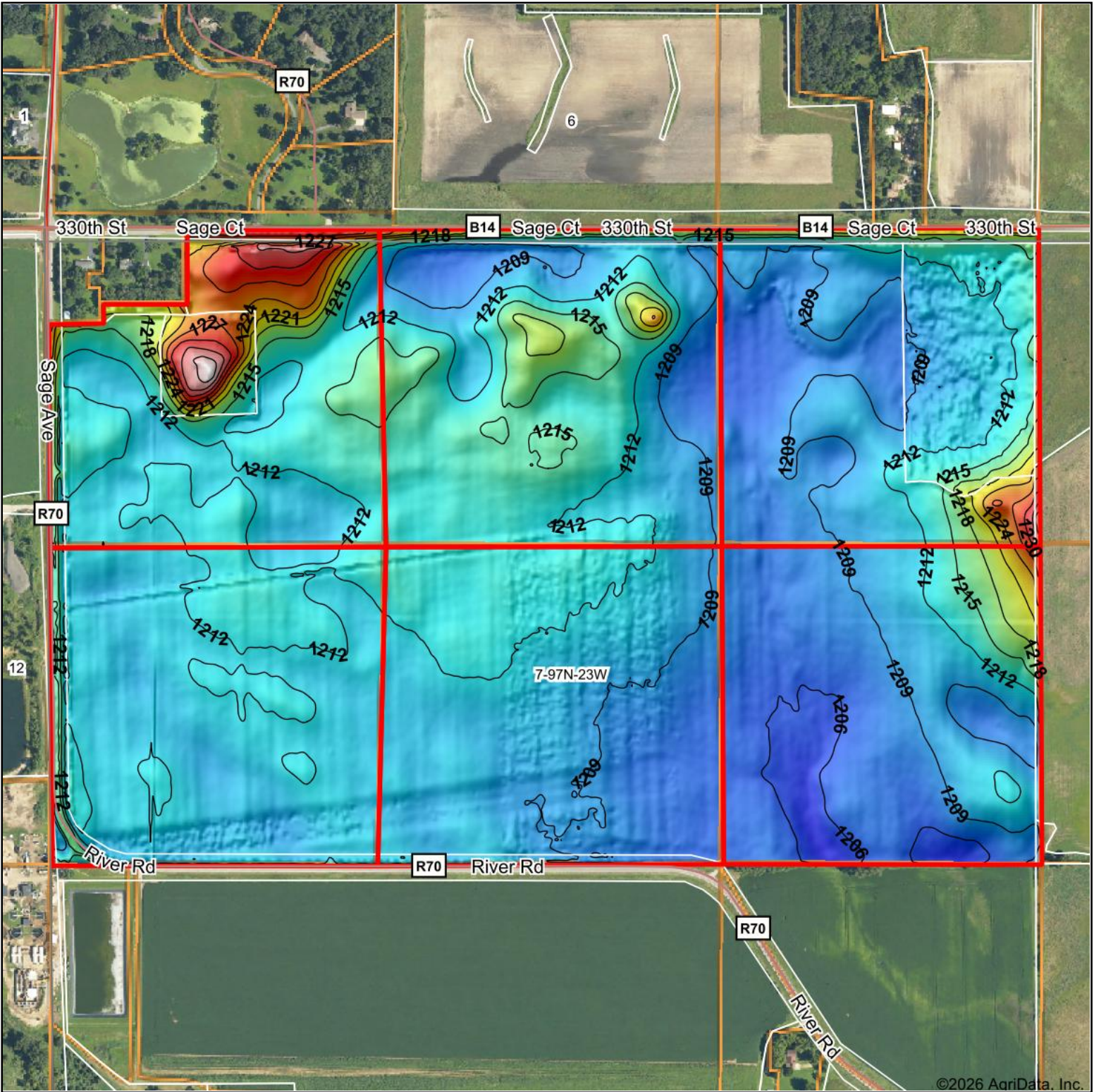
Area Symbol: IA081, Soil Area Version: 36

Code	Soil Description	Acres	Percent of field	CSR2 Legend	Non-Irr Class *c	CSR2**
1032	Spicer silty clay loam, 0 to 2 percent slopes	31.67	41.0%		IIw	91
511	Blue Earth mucky silt loam, 0 to 1 percent slopes	18.84	24.4%		IIIw	66
1339	Truman silt loam, 0 to 2 percent slopes	15.18	19.6%		Iw	99
1595	Harpster silty clay loam, 0 to 2 percent slopes	5.53	7.1%		IIw	76
107	Webster clay loam, 0 to 2 percent slopes	2.25	2.9%		IIw	86
236D2	Lester loam, 10 to 16 percent slopes, moderately eroded	1.94	2.5%		IVe	49
28B	Dickman sandy loam, 2 to 6 percent slopes	1.14	1.5%		IIIe	20
6	Okoboji silty clay loam, 0 to 1 percent slopes	0.63	0.8%		IIIw	59
55	Nicollet clay loam, 1 to 3 percent slopes	0.17	0.2%		Iw	89
Weighted Average					2.12	82.9

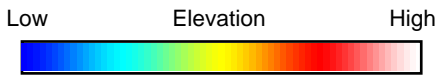
**IA has updated the CSR values for each county to CSR2.

*c: Using Capabilities Class Dominant Condition Aggregation Method

Topography Hillshade



©2026 AgriData, Inc.



Source: USGS 3 meter dem



Interval(ft): 3

Min: 1,203.6

Max: 1,237.3

Range: 33.7

Average: 1,211.0

Standard Deviation: 4.23 ft



3/26/2026

7-97N-23W
Hancock County
Iowa

Boundary Center: 43° 14' 18.94, -93° 36' 34.83



Maps Provided By:



© AgriData, Inc. 2025 www.AgriDataInc.com

Field borders provided by Farm Service Agency as of 5/21/2008.